

JVC

HS-V1EG

ENGLISH

Supplementary instruction manual for JLIP Player Software Ver. 1.1

DEUTSCH

Ergänzende Bedienungsanleitung für JLIP Player Software-Version 1.1

FRANÇAIS

Mode d'emploi complémentaire pour le logiciel de montage JLIP version 1.1

NEDERLANDS

Extra aanwijzingen voor JLIP Player Software Versie 1.1

CASTELLANO

Manual de instrucciones complementarias para el software reproductor JLIP Ver. 1.1.

ITALIANO

Manuale supplementare di istruzioni per il Software Versione 1.1 per il lettore JLIP.

DANSK

Supplerende brugsanvisning for JLIP Player Software version 1.1

SUOMI

Lisäohjekirjanen JLIP-toistolaiteohjelmaversiolla 1.1

SVENSKA

Supplement till bruksanvisning för JLIP Player-programmet version 1.1

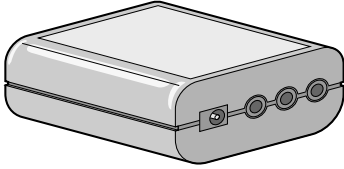
NORSK

Tillegg til bruksanvisningen for programvare til JLIP spiller versjon 1.1

РУССКИЙ

Дополнение к руководству по пользованию программой JLIP Player, версия 1.1.

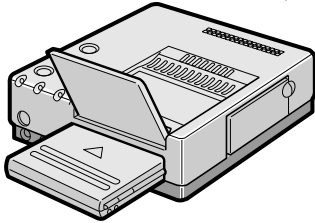
PC Junction Box



To JLIP
connector

3.5 mm
Diameter
4-pole Cable

To JLIP
connector



GV-PT2 Video Printer

The Video Printer GV-PT2 allows you to print still images captured from the connected image source unit.

- 1** Referring to pg. 10 of the JLIP Player Pack HS-V1's instruction manual,
 - Connect the PC Junction Box to PC.
 - Connect the PC Junction Box to the image source unit equipped with JLIP connector.
- 2** Connect the PC Junction Box to the Video Printer GV-PT2.
- 3** Referring to pg. 12 and 13 of the Video Printer GV-PT2's instruction manual, connect the Video Printer GV-PT2 to the image source unit connected in step 1.

Printing

Before printing, perform the procedure listed below.

- Set VCR to external input.
- Set TV to VIDEO mode so that images from video printer appear.

1 BRING UP VIDEO PRINTER WINDOW

Select "Set-up" from "Video Printer" on the MOVIE PLAYER window.

- The "Video Printer" window appears.
- To view the buttons on the MOVIE PLAYER window, move the "Video Printer" window to the right and up keeping the title bar on the "Video Printer" window clicked.

2 PLAYBACK

Click ► on the MOVIE PLAYER window.

- The "Video Printer" window appears behind the MOVIE PLAYER window.
- To view the "Video Printer" window, click the title bar labelled "Video Printer".

3 STORE SCENE

Click "STORE" on the "Video Printer" window at the scene you want to print.

- The selected scene is stored in memory and appears on the TV monitor.

4 PRINT

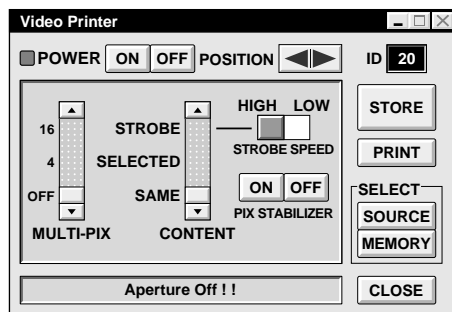
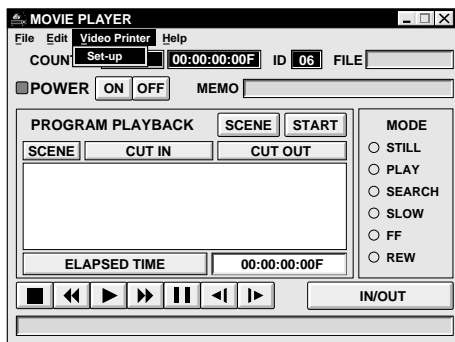
Insert print paper into the video printer and click "PRINT".

- Also refer to the video printer's instruction manual.

The following print styles are also available:

- Printing the same scene 4 or 16 times on one sheet. (Multi-Print)
- Printing various scenes on the same print sheet. (Multi-Print)
- Printing a scene within a scene. (Inset Print)
- Storing a selected number of images at short intervals and printing them on one sheet. (Strobe)

Also refer to the video printer's instruction manual.



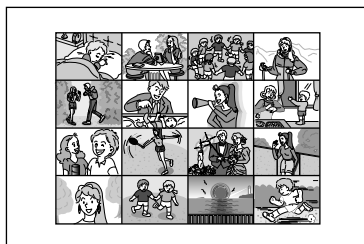
Auto Capture

Preparation

- Load the tape into the video unit.
- Open a saved file (☞ pg. 20 of the JLIP Player Pack HS-V1's instruction manual).
- Select file name (☞ pg. 20 of the JLIP Player Pack HS-V1's instruction manual).
- Prepare for printing (refer to the GV-PT2 instruction manual).
- Select desired layout using the remote control unit provided with the GV-PT2.

To Print Captured Video Data with Video Printer

Captured video data can be automatically scanned and printed.
You can print OFF, 4 or 16 images on one sheet.



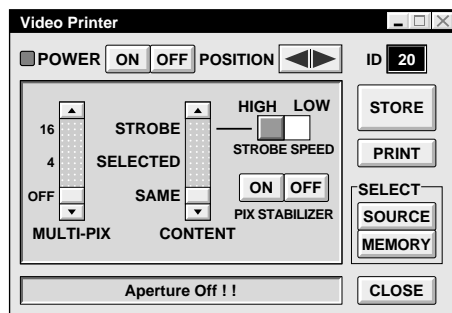
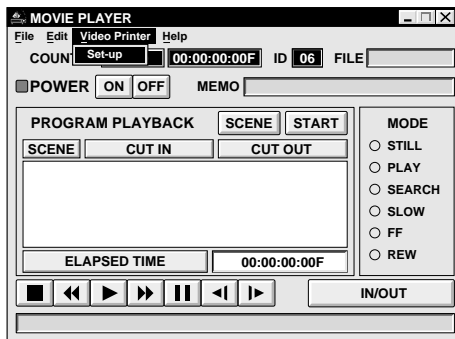
1
2

Select "Video Printer" — "Set-up" in the MOVIE PLAYER window.

- Video Printer window appears.

Select the number of scenes (OFF/4/16) and select "SAME" or "SELECTED" for the content.

- Select this by clicking the buttons (▲/▼).





3 Click Title in the MOVIE PLAYER window and activate the window.

4 Select "Edit" — "Set Function" — "Auto Capture".

5 Click "START"

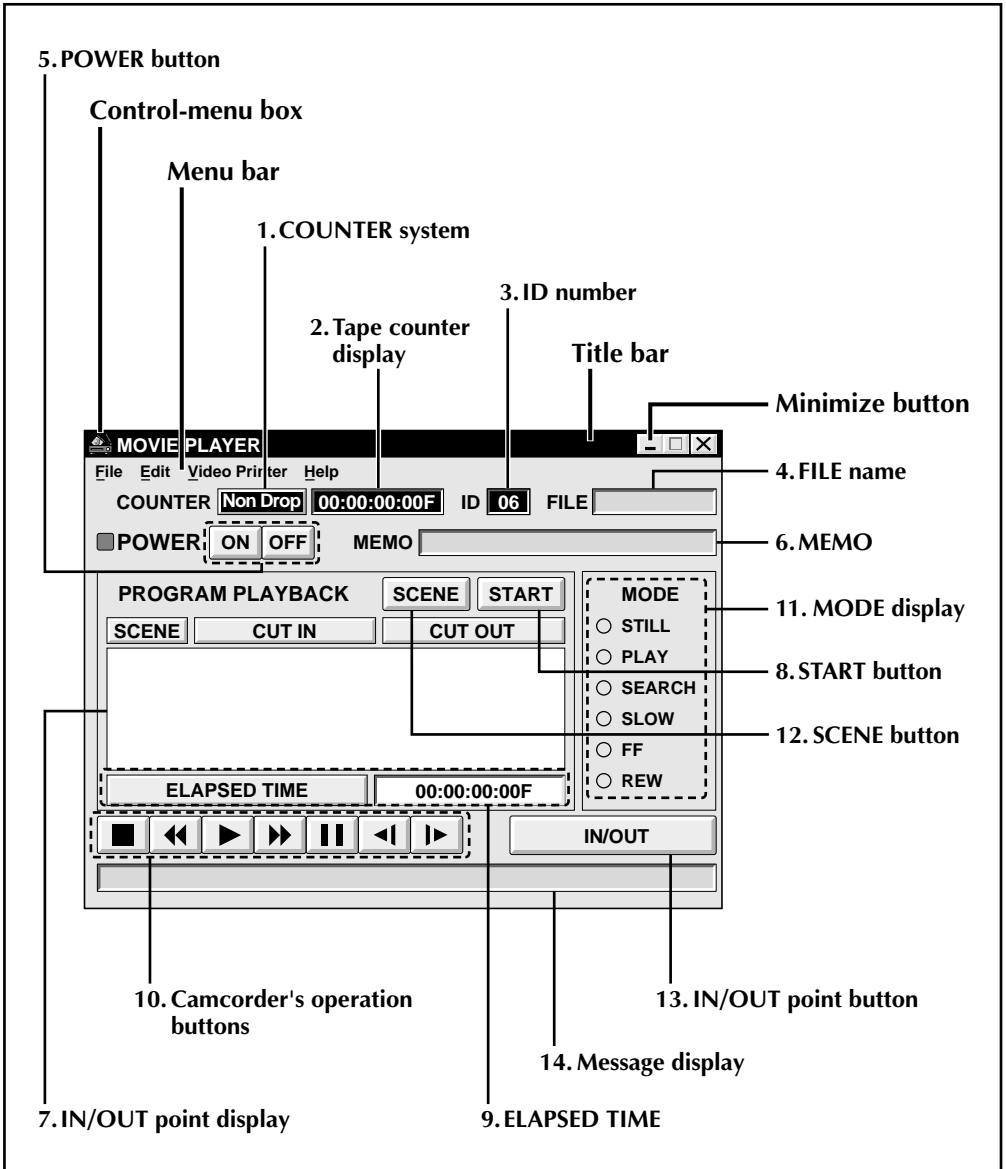
- The captured video data set first is searched and stored in the video printer.
- When the data has been stored, the message "**Image has been captured by printer.**" appears.
- If the number of scenes was set to "OFF", or "4 or 16" in step 2 and then to "SAME", you can start printing by clicking "**PRINT**".
- If the number of scenes was set to "4 or 16" in step 2 and then to "**SELECTED**", click "**NEXT SCENE . . .**". The next scene is automatically searched and stored in the video printer.

6 Click "PRINT" to start printing.

NOTES:

To print only the cut-in scene on the edited tape

- ① Perform editing (refer to pages 16 through 18).
- ② Print (follow steps 1 through 5 above).
 - Select "Auto Capture" in step 4.
 - Click "**START**" in step 5. The cut-in point of Scene No. 1 is automatically searched and stored in the video printer.
 - You cannot start storing from Scene No. 2 or subsequent scenes.
 - Even if the video unit is in Stop mode, clicking "**START**" automatically starts playback to search the cut-in point of Scene No. 1.
 - If you want to print a particular scene only, click "**SCENE**" in step 5.



1. COUNTER system

2. Tape counter display

- Displays actual tape position.

ex.

00: 01: 45: 10F
(Hours : Minutes : Seconds : Frames)

3. ID number

- Displays the selected device's ID number.

4. FILE name

- Displays file name after saving the program under a new name.

ex. travel

5. POWER button

- Turns the device on and off.
- If power is not supplied to the camcorder beforehand, you can not turn the camcorder on and off by clicking this button.
- Some camcorders cannot be turned on and off by clicking this button.

6. MEMO

- If you wish to add some comment to the file, you can input it.

ex. Europe Tour

7. IN/OUT point display

- You can set up to 99 in/out points per file.

8. START button

- Starts editing. Scenes are recorded in scene's numerical order. After starting editing, this button changes to STOP button.

9. ELAPSED TIME

- Displays the total elapsed time of all the programmed scenes.

10. Camcorder's operation buttons

- Operate the camcorder.



Stop button



REW/REW Search button



Play button



FF/FF Search button



Pause button



Reverse Slow button



Forward Slow button

- To start Reverse/Forward Slow-motion Search, first click the Pause button and then the Reverse/Forward Slow button.
- Functions your camcorder does not have cannot be performed by the above buttons.
- Click "File" — "Open VCR Control Window" on menubar to call up the "VCR Control" window. You can control the video source unit from this window.

11. MODE display

- Displays the camcorder's mode when operating the above buttons.

12. SCENE button

- Plays back only one programmed scene so that you can preview it.
- Operates only the camcorder.

13. IN/OUT point button

- Registers the cut-in and cut-out points of the scene you want to dub.

14. Message display

- Displays the connected device mode, etc.

To exit from the MOVIE PLAYER window, choose "Exit" from the "File" menu.

NOTE:

If you need the "MOVIE PLAYER HELP" window, choose "Contents" from the "Help" menu.

